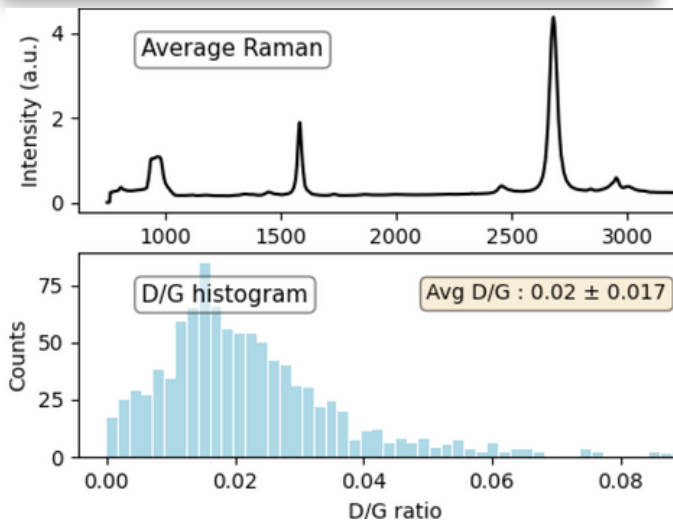


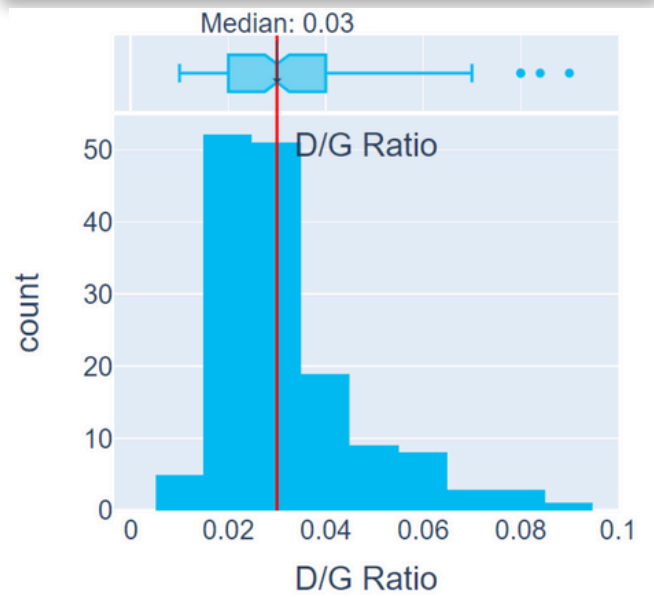
## Monolayer Graphene on Cu

Growth Method	CVD Synthesis
Quality Control	Raman, SEM, and Optical
Transparency	~97.7%
Graphene Thickness (Å)	3.45
Cu Grain Orientation	Predominantly Cu(111)
Cu Catalyst Thickness (µm)	20
Average Crystal Size (catalyst)	cm-scale
Average Graphene Grain Size (µm)	~80
Multilayer Coverage (%)	< 5%
I2D/IG Average - after transfer	> 1.6
ID/IG Average - after transfer	< 0.05
2D peak FWHM (cm-1) - after transfer	~ 35
Sheet Resistance (Ω/sq) – on SiO <sub>2</sub> /Si wafer	< 800
Mobility (cm <sup>2</sup> /Vs)* (dep on transfer)	> 1000
Appearance	Transparent film

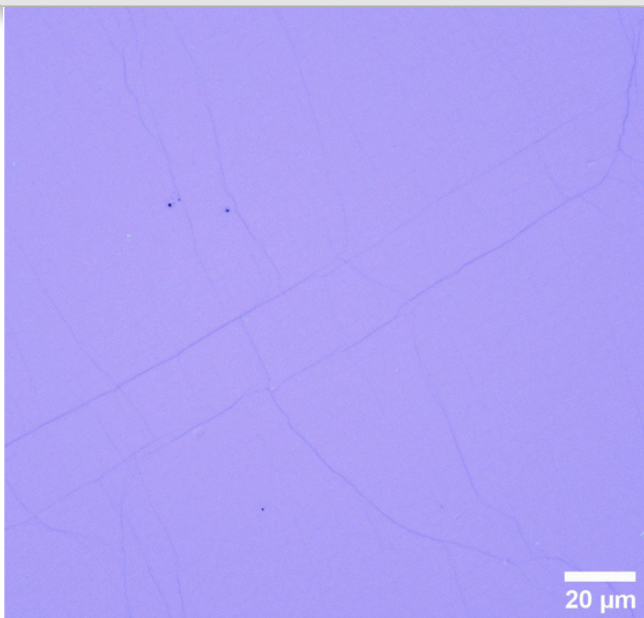
### Single Sample Raman Analysis



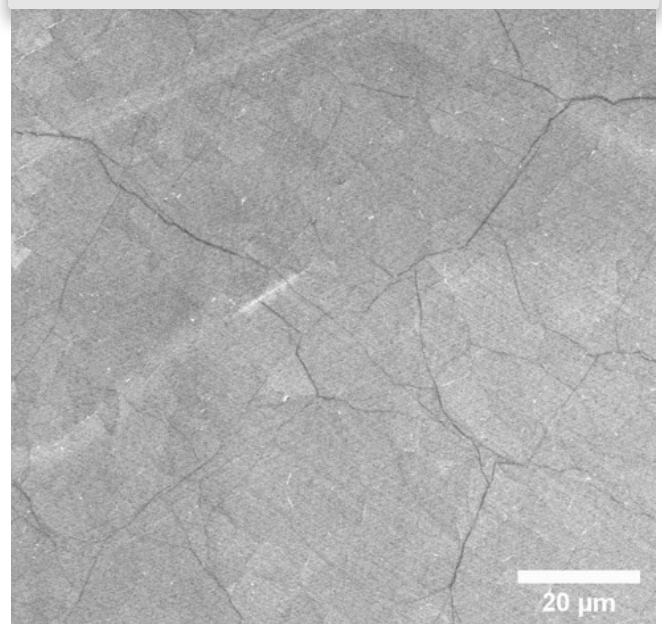
### Batch-to-Batch Raman Analysis



### Optical Image on Wafer

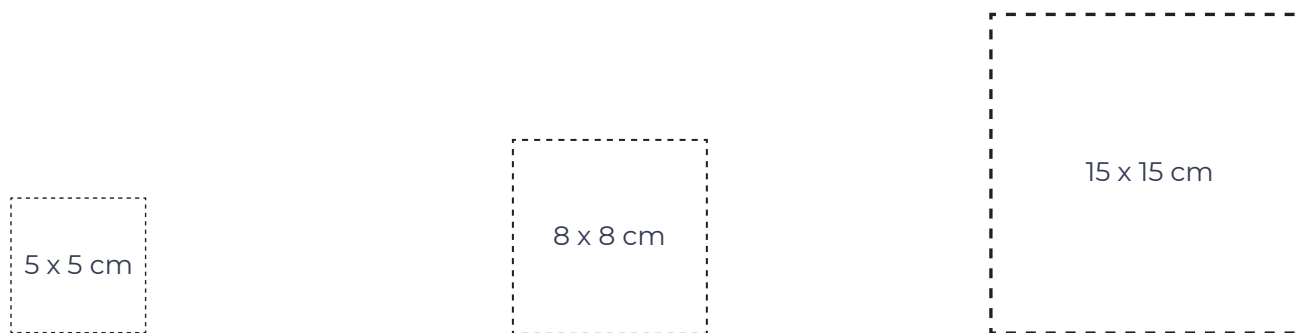


### SEM Image



## Size Guide

Our standard sizes include 5 x 5, 8 x 8, and 15 x 15 cm sheets.



We offer larger sizes up to 20 cm x 29 cm (~A4) for this specification with slightly higher multilayer content across ~2 cm edges of the width. For our roll-to-roll graphene materials, we offer similar graphene crystallinity listed on this specification with slightly varied graphene quality.

Please contact us at [sales@generalgraphenecorp.com](mailto:sales@generalgraphenecorp.com) if you are interested in our roll-to-roll graphene materials.

## Related Products

For more information about the products offered by General Graphene Corporation, please visit [www.generalgraphenecorp.com](http://www.generalgraphenecorp.com) or contact us at [sales@generalgraphenecorp.com](mailto:sales@generalgraphenecorp.com).